

SC-200° C-162L

用途 Application:

PME-MLCC 介质瓷粉

Dielectric Powders for PME-MLCC

瓷料特性 Features:

- 材料体系: BaTiO₃
Material System: BaTiO₃
- 工作温度范围可高达 200°C
Designed to operate from -55°C to 200°C
- 空气中烧结, 烧结温度 1100°C
Sinter in air. Sintering temperature is 1100°C
- 介电常数: K=1600±100
Dielectric constant: K=1600±100
- 分散性好
Good dispersion
- 环保型瓷料, 符合欧盟 RoHS 指令
Environment friendly, RoHS compliant

物理特性 Typical Physical Properties

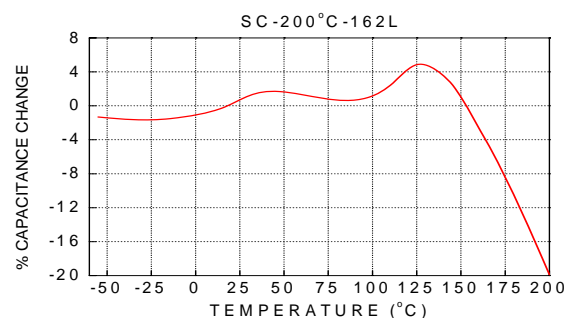
Density (g/cm ³)		≧3.7
Surface Area (m ² /g)		1.8~2.7
Particle Size (μ m)	D ₁₀	0.16
	D ₅₀	0.35
	D ₉₀	1.69
Moisture Content (120°C/5min)		≧0.3%
L.O.I (1100°C/1hr)		<0.2%

粉体 PSD 曲线 Powders PSD curve

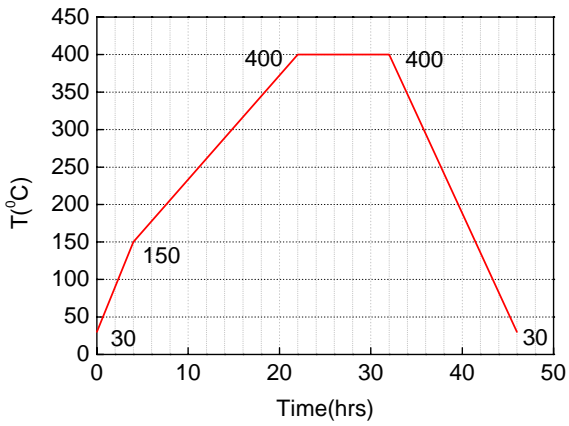
MLCC 电性能 Electrical Properties of MLCC

K (1KHz, 1V, 25°C)	1500~1700
DF (1KHz, 1V, 25°C)	<1.2%
IR (25°C, 100V _{DC})	>5 × 10 ¹⁰ Ω
TCC up to 200°C	+15 -20% Δ C Max
BDV (25°C)	>1100V/mil

TCC 曲线 Typical Temperature Coefficient



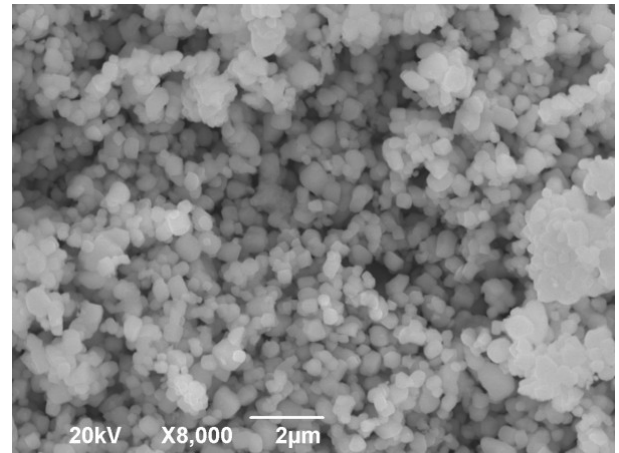
排胶曲线
Binder Burn-Out Curve



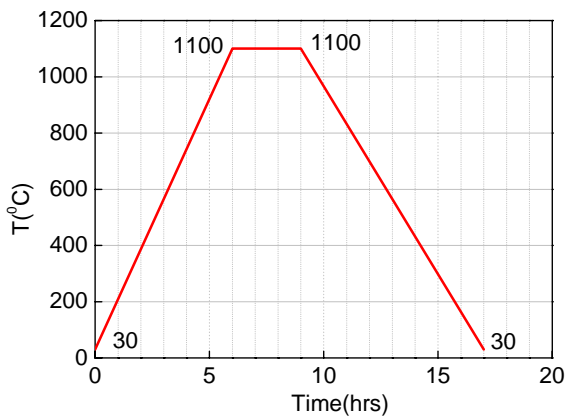
*PVB 粘合剂系统(PVB binder System)

*本曲线仅供参考(This curve is for reference only)

粉体 SEM 图
Powders SEM



烧结曲线
Sintering Curve



*本曲线仅供参考(This curve is for reference only)

MLCC 断面 SEM 图
MLCC Fracture Surface SEM

